

Speedfit[®]

The **LEAD FREE** Push-fit Solution for Plumbing & Heating

For use with Copper, PEX and CPVC Pipe



Includes New Additions:

- Expanded Line of CTS Black Fittings Range
- CTS White Fittings
- Water Treatment Fittings
- Pre-Packed Products
- POS/POP

USA Plumbing Catalog
January 2014



The John Guest Group has a long established reputation as a world leading manufacturer of push-in fittings, tube and other fluid control products. A reputation built on producing consistently high quality products with an ongoing commitment to value engineering and product development.



Quality Manufacture

Both design and manufacture are carried out in John Guest's modern, purpose-built facilities in the United Kingdom.

Maintaining control over the entire process - from initial tool design and tool-making to final assembly and testing - ensures that only products of the highest quality are produced.

It is this commitment to quality that has resulted in the Company receiving prestigious awards from many of the world's leading testing and approvals organizations.

John Guest is a preferred supplier to many international companies.

Contents:

		TECHNICAL CHECKLIST FOR PRODUCTS LISTED ON PAGES 4-10 ONLY p11		
CTS JG TWIST & LOCK® FITTINGS p4-6		POLYPROPYLENE FITTINGS p13-14		
LEAD FREE BRASS FITTINGS p6		ANGLE STOP ADAPTER VALVES/ ACCESSORIES POLYPROPYLENE VALVES p15-16		
PIPE AND INSERTS ACCESSORIES p7		PRE-PACKED FITTINGS OD SIZES p17		
PRE-PACKED FITTINGS – CTS SIZES p8-9		TECHNICAL CHECKLIST FOR PRODUCTS LISTED ON PAGES 13-16 ONLY p18		
BLACK CTS JG TWIST & LOCK® FITTINGS p10		POS DISPLAY & PLAN - O - GRAMS p19-20		

The Push-Fit Solution for Plumbing and Heating Systems

JG Speedfit® is an advanced push-fit fitting featuring John Guest Twist & Lock® technology that is suitable for the plumbing of normal domestic hot and cold water systems. Speedfit Fittings have been designed for use with Copper Pipe, Speedfit PEX Pipe, CPVC, and PEX Pipe conforming to US Plumbing Standards.

Performance specifications are well within those required for most normal domestic water supply systems including:

- **Hot and cold water distribution systems.**
- **Potable water distribution systems.**
- **Hydronic heating systems.**

Extensive tests have shown that Speedfit products will withstand temperatures and pressures in excess of normal working conditions. JG Speedfit® should be installed to conform with good plumbing practice.



Performance Benefits:

- **John Guest Twist & Lock® for added security**
- **Approved for behind-the-wall installations**
- **No scale buildup**
- **Pipe flexibility permits the cabling of pipe through less accessible areas**
- **No blowtorch required**
- **A permanent leak-proof connection**
- **Lower thermal diffusivity maintains safer surface temperature**
- **Pipe elasticity can reduce the possibility of bursting under freezing conditions**
- **Lead and corrosion free**
- **Less noise from water flow and expansion/contraction**
- **Long pipe lengths require fewer fittings**

Installation Benefits:

- **Works with Copper, CPVC, and PEX**
- **No tools required**
- **Installation time reduced by 40%**
- **Grip and seal connection**
- **Reduced pipe insertion force**
- **Disassemble without damage to pipe or fitting**
- **Easy to use in confined spaces**



SPECIAL APPLICATIONS:

Boats: The flexibility of the Speedfit System ensures it can be cabled easily around the interior and hidden from view.

RV: Speedfit is ideal for RV installations due to its flexibility and its resistance to corrosion and freezing.

Exhibitions: The unique ability of the Speedfit System to be easily disassembled and reused, together with its flexibility, makes Speedfit ideal for this application.

Portable Buildings (offices, toilets): As with RV's, Speedfit is well suited for these applications.

Agricultural and Horticultural: Speedfit has many applications in agricultural and horticultural environments.

HANDLING PIPE AND FITTINGS:

Ensure that the fittings and pipe are kept clean at all times by keeping them in the bags and box provided.

Do not empty Speedfit products onto the floor area. Be sure to keep the internal o-ring seals free from dirt and debris.

PRODUCT SELECTION AND INSTALLATION:

John Guest fittings and related products are specifically designed and manufactured by John Guest to the technical specifications set out in the John Guest Product Catalogs. All John Guest fittings and related products should be selected, installed, used, and maintained in accordance with these Technical Specifications. It is the customer's/user's responsibility to ensure that John Guest fittings and related products are suitable for their intended applications, are properly installed and maintained, and are used in accordance with the Technical Specifications. It is also the customer's/user's responsibility to provide its own customers with any relevant technical information about John Guest products it supplies them.

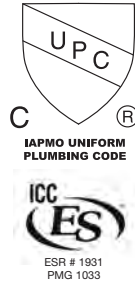
Speedfit® must not be used for gas, fuel oil or compressed air applications.

John Guest produces a specially designed push fit system of pipe and fittings for compressed air installations. See separate literature for details.

Working pressures and temperatures:

Application	Max. Working Pressure	Max. Working Temperature
Water	160 psi	73° F
Water	100 psi	180° F
Water	80 psi	200° F

STANDARDS AND AFFILIATIONS



Speedfit complies with the applicable sections of the latest edition of the Uniform Plumbing Code® and the International Plumbing Code®, including behind-the-wall installations. Refer to the applicable code listings for the latest information.

Speedfit Products are manufactured in compliance with, ASTM F876, ASTM F877, CSA B137-5, ASSE 1061 and IGC188



Some Speedfit fittings & pipes have NSF/ANSI Standard 14 which demonstrates compliance with USA Plumbing Codes, cNSFus – which complies with Canada and US Standards, CSA – Canadian Standards, pw – potable water, rfh – radiant floor heating, all have NSF Standard 61 Certification for Drinking Water System Components and Materials which contact drinking water. Including Annex G where applicable.



John Guest quality system is certified by BSI to BS EN ISO 9001.



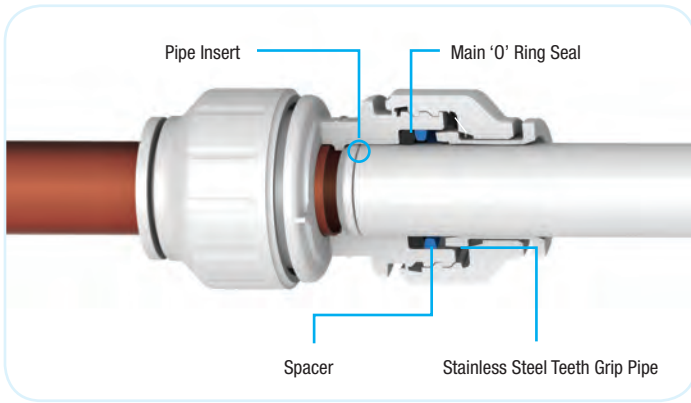
The Genuine JG symbol represents our commitment to our customers, and what the John Guest name means to business: Quality, Reliability, and Support.

WARRANTY:

As a result of long-term testing programs and rigorous quality standards John Guest USA offers a 25-year warranty against defects in materials or manufacturing of PEI, MWI, and PSEI ranges of plumbing fittings and Speedfit PEX Pipe manufactured by John Guest.

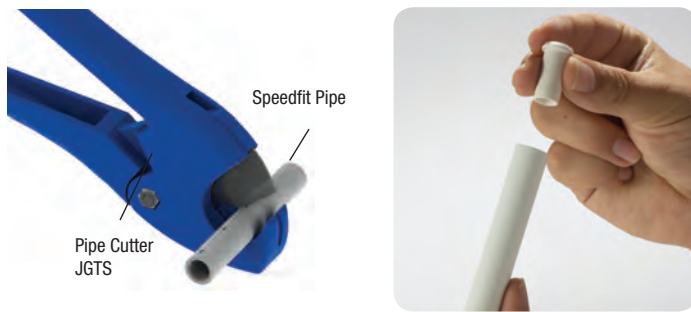
John Guest plumbing products are for use with normal domestic plumbing systems and supplied in accordance with our terms and conditions of sale.

MAKING A GOOD CONNECTION



John Guest Twist and Lock® Fittings have a collet with stainless steel teeth that grip the pipe when fully inserted, and an O-ring to provide a permanent leak-proof seal. The additional benefit of the Twist and Lock fitting is that a twist of the screw-cap gives greater compression on the O-ring seal and locks the pipe in place for greater security.

PREPARE THE PIPE

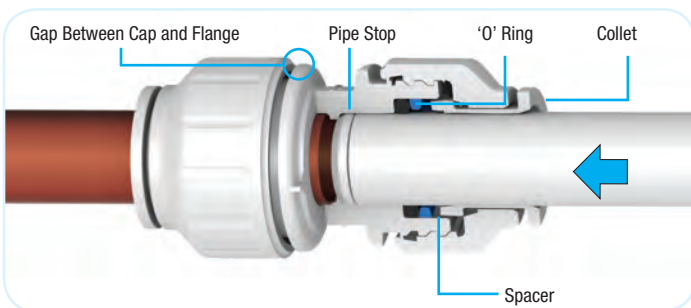


To prevent damage to the O-ring remove all burrs and sharp edges. When using Speedfit® or other types of PEX Pipe, we recommend the use of Pipe Insert.

HOW TO MAKE A CONNECTION

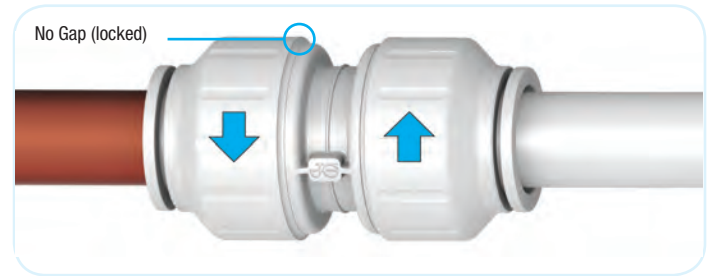
Fittings and pipe should be kept clean, bagged, and undamaged before use.

TWIST AND LOCK FITTINGS



The fitting should be in the 'unlocked' position. This is shown by a small gap between the screw-cap and the body flange.

Push the pipe into the fitting and up to the pipe stop.

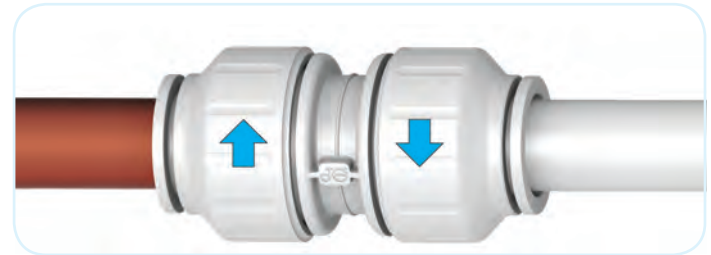


Twist the screw-cap until it touches the body flange. This locks the pipe into position and increases the o-ring seal around the pipe.

Pull to check that it is secure. It is good practice to test the system prior to leaving the site or before use. Our recommended test procedure is shown in our Technical Checklist.

TO DISCONNECT:

Ensure that the system is depressurized.



Be sure to twist the screw-cap back to the unlock position.

Push the collet square against the face of the fitting by using fingers. With the collet held in this position the pipe can be removed.

The fitting can be used again without the need for replacement parts. (Ensure the fitting is clean before every use).



WHAT NOT TO DO

- Do not use damaged or scored pipe
- Do not use a hacksaw to cut the pipe
- Do not leave burrs on the end of the pipe
- Do not forget to push the pipe fully into the fitting, past both the collet (gripper) and the O-ring.
- Do not insert fingers into the fitting as the stainless steel teeth may cause injury.



Remember to pressure test the completed installation according to the recommendations in our Technical Checklist.

CTS JG TWIST & LOCK® FITTINGS

FOR USE WITH COPPER, PEX AND CPVC PIPE



The PEI Range of JG Twist & Lock® Fittings is offered in 1/2", 3/4" and 1" CTS sizes. The fittings are manufactured from high quality engineered plastic with EPDM O-Rings. Speedfit Push-in System is suitable for hot and cold water plumbing applications.

Refer to page 11 for detailed technical specification

Prices subject to change without notice.

TEE



PART NO.	SIZE CTS	BAG QTY	BOX QTY
PEI0220	1/2"	5	25
PEI0228	3/4"	2	10
PEI0236	1"	1	5

ELBOW



PART NO.	SIZE CTS	BAG QTY	BOX QTY
PEI0320	1/2"	5	40
PEI0328	3/4"	5	20
PEI0336	1"	1	10

REDUCING ELBOW



PART NO.	SIZE CTS	BAG QTY	BOX QTY
PEI212820	3/4" X 1/2"	5	25
PEI213628	1" X 3/4"	1	10

COUPLER



PART NO.	SIZE CTS	BAG QTY	BOX QTY
PEI0420	1/2"	5	40
PEI0428	3/4"	5	25
PEI0436	1"	1	15

REDUCER



PART NO.	SIZE STEM x CTS	BAG QTY	BOX QTY
PEI062820	3/4" x 1/2"	10	50
PEI063628	1" x 3/4"	5	30

REDUCING COUPLER



PART NO.	SIZE CTS	BAG QTY	BOX QTY
PEI202820	3/4" x 1/2"	5	30
PEI203628	1" x 3/4"	5	15

STEM ELBOW

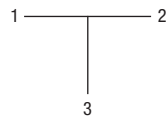


PART NO.	SIZE STEM x CTS	BAG QTY	BOX QTY
PEI222020	1/2" x 1/2"	10	60
PEI222828	3/4" x 3/4"	5	25

REDUCING TEE



Sizes are listed in the following order

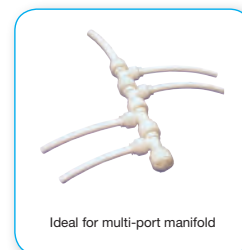


PART NO.	SIZE CTS	BAG QTY	BOX QTY
PEI3028A	3/4" x 3/4" x 1/2"	5	15
PEI3028B	3/4" x 1/2" x 1/2"	5	20
PEI3028C	1/2" x 1/2" x 3/4"	5	20
PEI3028D	3/4" x 1/2" x 3/4"	5	15
PEI3036A	1" x 1" x 3/4"	1	10

STACKABLE TEE



PART NO.	SIZE CTS	BAG QTY	BOX QTY
PEI532020	1/2" x 1/2" x 1/2"	5	30
PEI532820	3/4" x 3/4" x 1/2"	5	20
PEI532828	3/4" x 3/4" x 3/4"	1	15



BURST PIPE REPAIR FITTING/SLIP CONNECTOR



PART NO.	SIZE CTS	BAG QTY	BOX QTY
1/2SCP	1/2"	1	5
3/4SCP	3/4"	1	5

A quick and easy method of replacing burst or damaged pipe without the need to alter existing pipe work.

SLIP TEE CONNECTOR



PART NO.	SIZE CTS	BAG QTY	BOX QTY
1/2TKP	1/2"	1	5
3/4TKP	3/4"	1	5

Note Tee Installation Kits do not have IAPMO or ICC approval.

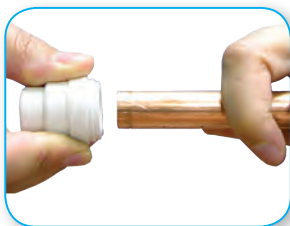
Provides a simple method of breaking into and branching off a rigid run without altering existing pipe work.

TEST CAP

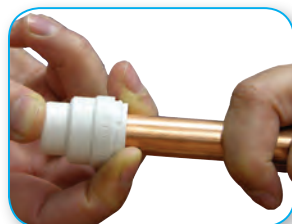


PART NO.	SIZE CTS	BAG QTY	BOX QTY
PSEI4620	1/2"	10	150
PSEI4628	3/4"	5	80
PSEI4636	1"	5	40
NEW PSEI4620B (Blue)	1/2"	10	150
PSEI4620R (Red)	1/2"	10	150
PSEI4628B (Blue)	3/4"	5	80
PSEI4628R (Red)	3/4"	5	80

Easy to Connect



Easy to Disconnect



The unique feature of the Speedfit concept is the ability to easily connect and disconnect the Test Cap. Test Caps also provide a leak-proof seal.

They can be used to temporarily "cap-off" installations for pressure testing and rough inspections.

With Speedfit Test Caps there is no need for tools, sweating or threading. They can be used with plastic or copper pipe, and are reusable many times over.

FEMALE SWIVEL CONNECTOR



PART NO.	SIZE CTS x NPS	BAG QTY	BOX QTY
PEISTC2034	1/2" x 1/2"	10	50

Hand tighten only, no spanner required

FEMALE SWIVEL ELBOW



PART NO.	SIZE CTS x NPS	BAG QTY	BOX QTY
PEIBTC2034	1/2" x 1/2"	10	50

Hand tighten only, no spanner required

FEMALE BALLCOCK CONNECTOR



PART NO.	SIZE CTS x UNS	BAG QTY	BOX QTY
PEISTC20C75	1/2" x 7/8" - 15/16"	10	50

Connects to toilet fill valve.

Hand tighten only, no spanner required

FEMALE BALLCOCK ELBOW



PART NO.	SIZE CTS x UNS	BAG QTY	BOX QTY
PEIBTC20C75	1/2" x 7/8" - 15/16"	10	50

Connects to toilet fill valve.

Hand tighten only, no spanner required



Refer to page 11 for detailed technical specifications

Installation instructions are provided with the product.

MALE CONNECTOR



PART NO.	SIZE CTS x NPT	BAG QTY	BOX QTY
PSEI012024	1/2" x 1/2"	10	80
PSEI012026	1/2" x 3/4"	5	60
PSEI012826	3/4" x 3/4"	5	50
PSEI013626	1" x 3/4"	2	30
PSEI013628	1" x 1"	2	20



FEMALE CONNECTOR



PART NO.	SIZE CTS x NPS	BAG QTY	BOX QTY
PEI452034	1/2" x 1/2"	5	50

FEMALE CONNECTOR



PART NO.	SIZE CTS x NPT	BAG QTY	BOX QTY
PSEI452826	3/4" x 3/4"	5	40

MALE FIXED ELBOW



PART NO.	SIZE CTS	BAG QTY	BOX QTY
PSEI482024	1/2" x 1/2"	5	60



SHUT OFF VALVE •



PART NO.	SIZE CTS x CTS	BAG QTY	BOX QTY
PSEISV20P	1/2"	1	100
PSEISV28P	3/4"	1	75

Firm 1/4 turn handle, prevents unwanted movement.

• **1/4 Turn Valves.** These valves have been designed to allow temporary servicing of downstream equipment and must only be used in the fully open or fully closed position.

LEAD FREE BRASS PRODUCTS



- Lead Free
- Dezincification Resistant

BRASS MALE CONNECTOR



PART NO.	SIZE CTS x NPT	BAG QTY	BOX QTY
MWI012024LF	1/2" x 1/2"	10	100
MWI012026LF	1/2" x 3/4"	10	100
MWI012826LF	3/4" x 3/4"	5	50

BRASS MALE STEM ADAPTER



PART NO.	SIZE CTS x NPT	BAG QTY	BOX QTY
MWI052024LF	1/2" x 1/2"	10	100
MWI052826LF	3/4" x 3/4"	5	40

Manufactured in DZR Brass

DO NOT USE THESE VALVES:

- In a partially open position to control flow.
- To provide a permanent termination.
- Without tubing assembled or plugged (or threaded connections sealed).
- As a tap or "faucet".

1/4 Turn Valves are indicated by this marker '•'

PIPE AND INSERTS



PEX PIPE



PART NO.	SIZE CTS x FEET	BOX QTY
----------	--------------------	------------

US1/2PEX-100F-W	1/2" x 100'	1
US3/4PEX-100F-W	3/4" x 100'	1



Coil pipe in 100 foot lengths.

W denotes white color pipe. Red and Blue pipe available at the same price as white, use suffix R or B



PART NO.	SIZE CTS	BUNDLES
----------	-------------	---------

US1/2PEX-10x10-W	1/2"	1
US3/4PEX-10x10-W	3/4"	1
US1PEX-10x10-W	1"	1



Bundles of ten 10-foot lengths

W denotes white color pipe. Red and Blue pipe is available in 1/2" and 3/4" at the same price as white, use suffix R or B

PIPE INSERT



PART NO.	SIZE CTS	BAG QTY	BOX QTY
----------	-------------	------------	------------

TSI20	1/2"	50	500
TSI28	3/4"	25	250
TSI36	1"	10	150

ACCESSORIES

Products below are not listed with IAPMO

NAIL CLIP



PART NO.	SIZE CTS	BAG QTY	BOX QTY
----------	-------------	------------	------------

NPCI20	1/2"	50	400
NPCI28	3/4"	50	250

PIPE CLIPS AND SPACER



PART NO.	SIZE CTS	BAG QTY	BOX QTY
----------	-------------	------------	------------

PIPE CLIP			
USCLIP20	1/2"	50	200
USCLIP28	3/4"	50	100
USCLIP36	1"	20	80



PIPE CLIP SPACER			
PCSW		50	400

PIPE CUTTER



PART NO.	SIZE CTS	PACK QTY
----------	-------------	-------------

JG-TS	-	1
-------	---	---

HEAVY DUTY PIPE CUTTER



PART NO.	SIZE CTS	PACK QTY
----------	-------------	-------------

JG HDC	-	1
BLADE JGHDC	-	1



FOR USE WITH COPPER, PEX AND CPVC PIPE

SINGLE-PACKED



System Benefits:

- Quick connect and Disconnect
- Easy to use in confined spaces
- No Tools Required
- A permanent leak-proof connection
- Plastic products are lead-free and corrosion-free

Merchandising and Distribution Benefits:

- Strong Branding
- User Instructions on Bag
- Ziploc Bags
- English and Spanish Instructions
- Regional Sales Support

TEE



PART NO.	SIZE CTS	BAG QTY
PEI0220P	1/2"	1
PEI0228P	3/4"	1

ELBOW



PART NO.	SIZE CTS	BAG QTY
PEI0320P	1/2"	1
PEI0328P	3/4"	1

REDUCING ELBOW



PART NO.	SIZE CTS	BAG QTY
PEI212820P	3/4" x 1/2"	1

COUPLER



PART NO.	SIZE CTS	BAG QTY
PEI0420P	1/2"	1
PEI0428P	3/4"	1

REDUCER



PART NO.	SIZE STEM x CTS	BAG QTY
PEI062820P	3/4" x 1/2"	1

REDUCING COUPLER



PART NO.	SIZE CTS	BAG QTY
PEI202820P	3/4" x 1/2"	1

SLIP TEE CONNECTOR



PART NO.	SIZE CTS	BAG QTY
1/2TKP	1/2"	1
3/4TKP	3/4"	1

Easily adds a branch to an existing line.

SLIP CONNECTOR/BURST PIPE REPAIR FITTING



PART NO.	SIZE CTS	BAG QTY
1/2SCP	1/2"	1
3/4SCP	3/4"	1

Designed for burst pipe repairs.

REDUCING TEE



PART NO.	SIZE CTS	BAG QTY
PEI3028AP	3/4" x 3/4" x 1/2"	1



FEMALE SWIVEL ELBOW



PART NO.	SIZE CTS x NPS	BAG QTY
PEIBTC2034P	1/2" x 1/2"	1

FEMALE SWIVEL CONNECTOR



PART NO.	SIZE CTS x NPS	BAG QTY
PEISTC2034P	1/2" x 1/2"	1

Connects to toilet fill valve.

END CAP



PART NO.	SIZE	BAG QTY
PSEI4620P	1/2"	1
PSEI4628P	3/4"	1

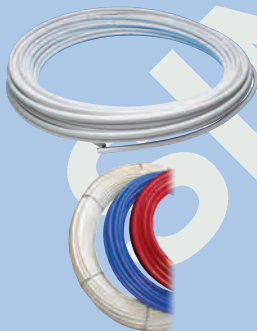
PIPE INSERT



PART NO.	SIZE CTS	BAG QTY
TSI20P	1/2"	10
TSI28P	3/4"	5

JG SPEEDFIT® PIPE

PEX PIPE



PART NO.	SIZE CTS x FEET	BOX QTY
US1/2PEX-100F-W	1/2" x 100'	1
US3/4PEX-100F-W	3/4" x 100'	1

Coil pipe in 100 foot lengths. W denotes white color pipe. Red and Blue pipe available at the same price as white, use suffix R or B.

PART NO.	SIZE CTS	BUNDLES
US1/2PEX-10x10W	1/2"	1
US3/4PEX-10x10W	3/4"	1
US1PEX-10x10W	1"	1



MALE CONNECTOR



PART NO.	SIZE CTS x NPT	BAG QTY
PSEI012024P	1/2" x 1/2"	1
PSEI012026P	1/2" x 3/4"	1
PSEI012826P	3/4" x 3/4"	1

FEMALE CONNECTOR



PART NO.	SIZE CTS x NPT	BAG QTY
PSEI452826P	3/4" x 3/4"	1

MALE FIXED ELBOW



PART NO.	SIZE CTS x NPT	BAG QTY
PSEI482024P	1/2" x 1/2"	1

SHUT-OFF VALVE •



PART NO.	SIZE CTS x CTS	BAG QTY
PSEISV20P	1/2" x 1/2"	1
PSEISV28P	3/4" x 3/4"	1

• **1/4 Turn Valves.** These valves have been designed to allow temporary servicing of downstream equipment and must only be used in the fully open or fully closed position.

DO NOT USE THESE VALVES:

- In a partially open position to control flow.
- To provide a permanent termination.
- Without tubing assembled or plugged (or threaded connections sealed).
- As a tap or "faucet".

1/4 Turn Valves are indicated by this marker ••

BLACK CTS JG TWIST & LOCK® FITTING

FOR USE WITH COPPER, PEX AND CPVC PIPE



NEW
Lead Free
UV Resistant

The Black PEI Range of Twist & Lock Fittings is offered in 1/2, 3/4" and 1" CTS sizes. They have been specifically designed for Water Filtration/Softener Installs; however, they are also suitable for applications in Plumbing Repair and Remodel, Marine and R.V. The fittings are manufactured from high quality engineered plastic with EPDM O-rings. Speedfit Push-in system is suitable for hot and cold water plumbing applications.

Prices subject to change without notice.

Not Suitable for gas.

COUPLER



PART NO.	SIZE CTS	BAG QTY	BOX QTY
PEI0428E	3/4"	5	25
PEI0436E	1"	1	15

ELBOW



PART NO.	SIZE CTS	BAG QTY	BOX QTY
PEI0328E	3/4"	5	20
PEI0336E	1"	1	10

TEE



PART NO.	SIZE CTS	BAG QTY	BOX QTY
PEI0228E	3/4"	2	10
PEI0236E	1"	5	5

NEW PLUG IN ELBOW



PART NO.	SIZE CTS X STEM	BAG QTY	BOX QTY
PEI222828E	3/4" x 3/4"	5	25
PEI223636E	1" x 1"	10	25

NEW REDUCING COUPLER



PART NO.	SIZE CTS	BAG QTY	BOX QTY
PEI203628E	1" x 3/4"	5	15

MALE CONNECTOR



PART NO.	SIZE CTS x NPT	BAG QTY	BOX QTY
NEW PSEI012024E	1/2" x 1/2"	10	80
NEW PSEI012026E	1/2" x 3/4"	5	60
NEW PSEI012826E	3/4" x 3/4"	5	50
NEW PSEI013626E	1" x 3/4"	2	30
PSEI013628E	1" x 1"	2	20

Only to be used with mating plastic threads.

MALE STEM ADAPTER



PART NO.	SIZE CTS x NPT STEM MALE	BAG QTY	BOX QTY
PSEI052826E	3/4" x 3/4"	10	60
PSEI053628E	1" x 1"	10	40

Only to be used with mating plastic threads.

NEW MALE FIXED ELBOW



PART NO.	SIZE CTS x NPT	BAG QTY	BOX QTY
PSEI482024E	1/2" x 1/2"	5	60

Only to be used with mating plastic threads.

The Brand Most Trusted by Water Professionals Worldwide



Working Pressures and Temperatures:

Application: Water

Max. Pressure	Max Temperature
160 psi	73°F
100 psi	180°F
80 psi	200°F



Do not use with gas, fuel oil or compressed air applications.

Speedfit® Technical Checklist

CTS - SPEEDFIT® TWIST & LOCK® (PEI AND PSEI RANGE) FOR PRODUCTS LISTED ON PAGES 4-10.

Fittings and pipe should be kept clean and undamaged before use.

- **Sizes:** 1/2" to 1" CTS.
- **Pipes:** Speedfit® fittings can be used with: PEX, Copper and CPVC Pipes conforming to ASTM Standards. Speedfit® fittings cannot be used on stainless steel pipe.
- **Standards:** Speedfit® products are designed and manufactured under a fully integrated system assessed by B.S.I. to BS EN ISO9001. Speedfit® PEI and PSEI Fittings and Speedfit® PEX Pipe are also NSF-14 and NSF-61, IAPMO and ICC listed.
- **Do not use for gas, fuel oil or compressed air applications.**
- **Working pressures and temperatures:**

Application	Max. Pressure	Max. Temperature
Water	160 psi	73° F
Water	100 psi	180° F
Water	80 psi	200° F

- **Burst Pressure (fittings):** Speedfit® fittings used with copper, CPVC or Speedfit® PEX Pipe will withstand pressures well in excess of normal service conditions.
- **Insulation:** Comply with code requirements.
- **Minimum bend radius (PEX):**

Pipe Diameter	1/2" CTS	3/4" CTS
Min radius	7"	9"

- **Clip spacing (in inches):**
For surface mounted pipes.

Clip Spacing		
Pipe Diameter	Horizontal Run	Vertical Run
1/2" CTS	16"	20"
3/4" CTS	20"	30"
1" CTS	30"	36"

- **Expansion (PEX Pipe):** 1% on length between 68°F and 180°F.
- **Flow rates:** Comparable with metal systems.
- **Cleaners, inhibitors and descalents:** For advice on the use of additives such as corrosion inhibitors, the additive manufacturers should be consulted.
- **Paint and Chemicals:** Only use water or oil based paint. DO NOT ALLOW CONTACT WITH cellulose based paints, paint thinners or strippers, solder flux or acid based descalents or aggressive household cleaning products.
DO NOT ALLOW CONTACT WITH jointing compounds, cellulose-based paints, paint thinners, paint strippers, solder flux, acid-based descalents or aggressive cleaning products.
- **Solder Flux:** No fluxes of any type should come into contact with Speedfit® products. Extreme care should be taken to ensure that no such contact takes place.
- **Chlorine:** Speedfit® is suitable for use with water supplies containing up to 4ppm of chlorine.
- **Exposure to light:** Speedfit® products, when used indoors, are not affected by sunlight. When used outdoors, protect from ultraviolet light by lagging or painting.
- **Pipe clips:** Pipe clips should not be fitted any closer than 2.5 inches from the end of the fitting. Pipe should be adequately supported by pipe clips to prevent undue stress (side load) on fittings.
- **Pipe inserts: Plumbing:** John Guest recommends the use of pipe inserts for PEX pipe connections with John Guest Speedfit® products in Standard Residential Plumbing (hot and cold water) installations.
Pipe inserts: Heating: John Guest requires the use of pipe inserts for PEX pipe connections with John Guest Speedfit® products in all Heating installations.
- **Metal joists:** When 'cabling' plastic pipe through metal joists, ensure rubber grommets are in place to prevent damage to the pipe.

- **Connection to boilers:** A minimum 36 inches run of copper pipe must be installed between the hot water heater and the Speedfit® system.
- **Connection to Hot Water Heater:** A minimum 18 inches run of copper pipe must be installed between the hot water heater and the Speedfit® System.
- **Connection to copper pipe:** 18 inches is the minimum distance to make a solder connection on copper pipe inserted into a Speedfit® fitting. Ensure that no solder flux comes into contact with the fitting.
- **Concrete and masonry:** Speedfit® pipe and fittings can be laid in concrete and masonry providing they are installed in conduit pipe with access boxes for the fittings. This is to enable the pipe to expand and provide accessibility for both pipe and fittings. Fittings and pipe should be removable for possible replacement. Insulation is also recommended to protect against heat loss and the effects of frost. Fittings not to be used underground.
- **Electrical continuity:** If Speedfit® is used in an existing metal system, electrical continuity must be reinstated.
- **System testing:** To ensure the pipework and fittings have been installed correctly, whether it be on a new or extended system, it is essential that the system be checked and hydraulically wet tested. Testing should be at 30 psi for 10 minutes and 150 psi for 10 minutes. This testing, combined with other relevant checks, should reveal installation problems and is regarded as good plumbing practice. However, system testing should not be regarded as a substitute for correct installation (see also "Making a Good Connection").
- **Disinfection of Hot and Cold Water Systems.** Speedfit® can be disinfected after installation or as part of a routine maintenance program. The disinfection procedure must comply with code requirements. Only disinfection solutions specifically recommended as suitable for contact with plastic plumbing systems and, where necessary, employing specialist contractors may be used with Speedfit®. Disinfection solutions must only come into contact with the internal (wet) surfaces of the system. If any normal dry surfaces of a Speedfit® fitting come into contact with disinfection solution the whole fitting must be replaced immediately. The disinfection solution must be immediately flushed out at all draw out points with fresh, clean water at the end of the disinfection period. The solution must not be left in the system.
- **System flushing:** As is usual practice for any plumbing installation, flushing of the system prior to the use of Speedfit® is recommended to remove any contaminants/chemical residue from elsewhere in the system.
- **Vermin:** Speedfit® products will need special protection in vermin infested areas.
- **Tube insertion depths:**

	1/2" CTS	3/4" CTS	1" CTS
Twist and Lock Fittings	1 1/4"	1 5/8"	1 5/8"
Test Caps	1 1/8"	1 1/2"	1 1/2"
Brass Fittings	1 1/8"	1 1/2"	1 1/2"

- **Side Loads:** Fittings should not be subject to excessive side loads and they should not be used as support brackets. Tubing should be adequately supported to prevent excessive side loading.
- **Maximum torque values of threads:** in Ft lbs

		1/2" NPT	3/4" NPT	1" NPT
Plastic	NPT	2	3	3
Metal	NPT	3	4	4

It is recommended that all installations are checked prior to use to determine that a seal has been made.

John Guest USA, Inc. is not responsible for misprints or typographical errors.



PRODUCTS FOR WATER TREATMENT

John Guest's Standard line of Push-fit Fittings, Shut-off Valves, and Polyethylene Tubing has been designed for use with a wide range of industrial plumbing applications involving Water Purification, Reverse Osmosis, Ice Makers, Beverage Dispensing, Vending & OCS, R.V. and Marine, Car Washing Systems and many more.

The fittings are simple to use and require no tools to make reliable, leak-free connections.

Standard Push-fit Fittings, Shut-Off Valves, and Polyethylene Tubing are produced from FDA compliant materials and are listed with NSF International; however, these fittings are not IAPMO approved and should not be used in traditional plumbing applications, or with compressed air, explosive gasses or other fuels, or heating systems.



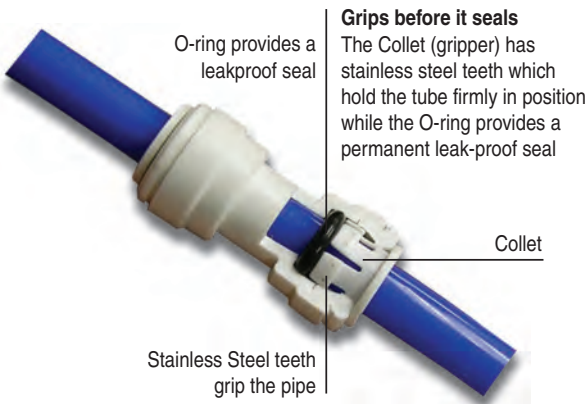
MATERIALS OF CONSTRUCTION

John Guest Fittings are made up of three components:

Bodies are produced in acetal copolymer or polypropylene.

O-rings are produced in EPDM.

Collets are produced in acetal copolymer or polypropylene with stainless steel teeth.



www.johnguest.com

PRODUCTS FOR WATER TREATMENT

CONTENTS:

POLYPROPYLENE FITTINGS

p13-14



QUICK CONNECT WATER SUPPLY/ ICE MAKER KIT

p15

NEW



ANGLE STOP ADAPTER VALVES POLYPROPYLENE VALVES

p15-16



▶ HOW TO MAKE A STANDARD CONNECTION

MAKING A GOOD CONNECTION

To make a connection, the tube is simply pushed in by hand; the unique patented John Guest collet locking system then holds the tube firmly in place without deforming it or restricting flow.

CUT THE TUBE SQUARE

Cut the tube square and remove burrs and sharp edges. Ensure that the outside diameter is free from score marks. For soft or thin-walled plastic tubing we recommend the use of a tube insert.



PUSH UP TO TUBE STOP

Push the tube into the fitting and up to the tube stop.



PULL TO CHECK SECURE

Pull on the tube to check that it is secure. Test the system before use.



TO DISCONNECT

Push in collet and remove tube.



To disconnect, ensure that the system is depressurized, push the collet square against the fitting. With the collet held in this position the tube can be removed.

ACCESSORIES

p16



LLDPE TUBING

p16

NEW



WATER TREATMENT SINGLE-PACKED FITTINGS

p17

NEW



TECHNICAL CHECKLIST

p18





Inch Polypropylene Fittings For Potable and Water Treatment Applications

The PP Range of inch-size push-in fittings is offered for tube sizes 1/4" O.D. to 1/2" O.D. The fittings are manufactured in white polypropylene with food grade EPDM O-rings. They have been developed to satisfy the filtered pure water market and wide range of applications.

The PP Range is NOT suitable for compressed air or heating applications.

Working Pressures and Temperatures

Water	Max.	150 psi at 70°F	(Max. 10 Bar at 20°C)
	Max.	60 psi at 140°F	(Max. 4 Bar at 60°C)
	Min.	33°F/1°C	



Prices are subject to change without notice.

MALE CONNECTOR NPTF THREAD



PART NO.	TUBE OD	THREAD NPTF	BAG QTY	BOX QTY
PP010821W	1/4	- 1/8	10	500
PP010822W	1/4	- 1/4	10	400
PP010823W	1/4	- 3/8	10	400
PP011222W	3/8	- 1/4	10	250
PP011223W	3/8	- 3/8	10	250
PP011224W	3/8	- 1/2	10	250
PP011623W	1/2	- 3/8	10	150
PP011624W	1/2	- 1/2	10	150

UNION CONNECTOR



PART NO.	TUBE OD	BAG QTY	BOX QTY
PP0408W	1/4	10	400
PPM0408W	5/16	10	300
PP0412W	3/8	10	200
PP0416W	1/2	10	100

PLUG



PART NO.	STEM OD	BAG QTY	BOX QTY
PP0808W	1/4	10	500
PPM0808W	5/16	10	500
PP0812W	3/8	10	400
PP0816W	1/2	10	300

UNION TEE



PART NO.	TUBE OD	BAG QTY	BOX QTY
PP0208W	1/4	10	300
PPM0208W	5/16	10	200
PP0212W	3/8	10	100
PP0216W	1/2	10	80
Blue Collet			
PP0208W-B	1/4	10	300

STEM ADAPTER NPTF THREAD



PART NO.	STEM OD	THREAD NPTF	BAG QTY	BOX QTY
PP050821W	1/4	x 1/8	10	500
PP050822W	1/4	x 1/4	10	500
PP051222W	3/8	x 1/4	10	300
PP051223W	3/8	x 3/8	10	200
PP051623W	1/2	x 3/8	10	250
PP051624W	1/2	x 1/2	10	200

SWIVEL ELBOW NPTF THREAD



PART NO.	TUBE OD	THREAD NPTF	BAG QTY	BOX QTY
PP090821W	1/4	x 1/8	10	300
PP090822W	1/4	x 1/4	10	200
PP091222W	3/8	x 1/4	10	100
PP091223W	3/8	x 3/8	10	100

UNION ELBOW



PART NO.	TUBE OD	BAG QTY	BOX QTY
PP0308W	1/4	10	400
PPM0308W	5/16	10	300
PP0312W	3/8	10	200
PP0316W	1/2	10	100
Blue Collet			
PP0308W-B	1/4	10	400

REDUCER



PART NO.	STEM OD	TUBE OD	BAG QTY	BOX QTY
PP061208W	3/8	- 1/4	10	400
PP061612W	1/2	- 3/8	10	200
PP062008W	5/8	- 1/4	10	200
PP062012W	5/8	- 3/8	10	200
PP062016W	5/8	- 1/2	10	150
PP061210W	3/8	- 5/16	10	400

SWIVEL BRANCH TEE CENTER LEG NPTF THREAD



PART NO.	TUBE OD	THREAD NPTF	BAG QTY	BOX QTY
PP100821W	1/4	x 1/8	10	200
PP100822W	1/4	x 1/4	10	200
PP101222W	3/8	x 1/4	10	100
PP101223W	3/8	x 3/8	10	100

Products in this section are not IAPMO approved.

SWIVEL MALE RUN TEE NPTF THREAD



PART NO.	TUBE OD	THREAD NPTF	BAG QTY	BOX QTY
PP110821W	1/4	x 1/8	10	200
PP110822W	1/4	x 1/4	10	200
PP111222W	3/8	x 1/4	10	100
PP111223W	3/8	x 3/8	10	100

BULKHEAD UNION



PART NO.	TUBE OD	Mounting Hole Dia.	BAG QTY	BOX QTY
PP1208W	1/4	0.67	10	200
PP1212W	3/8	0.83	10	100
PP1216W	1/2	1.06	5	50

Polypropylene Bulkhead Unions are not intended for submerged use.

REDUCING BULKHEAD UNION



PART NO.	TUBE OD	TUBE OD	Mounting Hole Dia.	BAG QTY	BOX QTY
PP121208W	3/8	- 1/4	0.83	10	150

REDUCING UNION CONNECTOR



PART NO.	TUBE OD	TUBE OD	BAG QTY	BOX QTY
PP201208W	3/8	- 1/4	10	250
PP201612W	1/2	- 3/8	10	150

REDUCING ELBOW



PART NO.	TUBE OD	TUBE OD	BAG QTY	BOX QTY
PP211008W	5/16	- 1/4	10	300
PP211208W	3/8	- 1/4	10	200
PP211612W	1/2	- 3/8	10	150

PLUG IN ELBOW



PART NO.	STEM OD	TUBE OD	BAG QTY	BOX QTY
PP220808W	1/4	- 1/4	10	500
PPM220808W	5/16	- 5/16	10	400
PP221208W	3/8	- 1/4	10	300
PP221212W	3/8	- 3/8	10	200
PP221616W	1/2	- 1/2	10	150
Blue Collet				
PP221212W-B	3/8	- 3/8	10	200

TWO WAY DIVIDER



PART NO.	TUBE OD	BAG QTY	BOX QTY
PP2312W	3/8	10	150



UNEQUAL TWO WAY DIVIDER



PART NO.	TUBE OD INLET	TUBE OD OUTLET	BAG QTY	BOX QTY
PP241208W	3/8	x 1/4	10	200

TUBE TO HOSE STEM



PART NO.	STEM OD	HOSE ID	BAG QTY	BOX QTY
PP251212W	3/8	- 3/8	10	400
PP251216W	3/8	- 1/2	10	300
PP251612W	1/2	- 3/8	10	300
PP251616W	1/2	- 1/2	10	250

REDUCING TEE



PART NO.	TUBE OD END	TUBE OD END	TUBE OD BRANCH	BAG QTY	BOX QTY
PP30080812W	1/4	x 1/4	x 3/8	19	150
PP30120812W	3/8	x 1/4	x 3/8	10	150
PP30121208W	3/8	x 3/8	x 1/4	10	150
PP301612W	1/2	x 1/2	x 3/8	10	50



FIXED TEE ADAPTER



PART NO.	TUBE OD END	TUBE OD END	NPTF BRANCH	BAG QTY	BOX QTY
PP641223W	3/8	x 3/8	x 3/8	10	150

FAUCET CONNECTOR UNS THREAD



PART NO.	TUBE OD	THREAD UNS	BAG QTY	BOX QTY
PP3208U7W	1/4	x 7/16 - 24	10	400
PP3212U7W	3/8	x 7/16 - 24	10	300

FEMALE ADAPTER NPTF THREAD



PART NO.	TUBE OD	THREAD NPTF	BAG QTY	BOX QTY
PP450821W	1/4	x 1/8	10	400
PP450822W	1/4	x 1/4	10	200
PP451222W	3/8	x 1/4	10	200
PP451223W	3/8	x 3/8	10	150

FIXED ELBOW NPTF THREAD



PART NO.	TUBE OD	THREAD NPTF	BAG QTY	BOX QTY
PP480821W	1/4	x 1/8	10	500
PP480822W	1/4	x 1/4	10	400
PP480823W	1/4	x 3/8	10	300
PP481222W	3/8	x 1/4	10	200
PP481223W	3/8	x 3/8	10	200

THREE WAY DIVIDER



PART NO.	TUBE OD INLET	TUBE OD OUTLET	BAG QTY	BOX QTY
PP491208W	3/8	x 1/4	10	150



STACKABLE TEE



PART NO.	TUBE OD END	TUBE OD END	TUBE OD BRANCH	BAG QTY	BOX QTY
PP641223W	3/8"	x 3/8"	x 3/8"	10	150

Products in this section are not IAPMO approved.

Inch Polypropylene Angle Stop Adapter Valves

Lead Free

The ASVPP Range of inch-size Angle Stop Adapter Valves is offered in white polypropylene with food grade EPDM o-rings. Our Angle Stop Adapter Valve connects between your valve and riser, to the main water supply line, for applications in Reverse Osmosis, Filtration Systems, Automatic Coffee Brewers, Ice-makers, and many more. Please refer to our Technical Support Department for guidance on use with other potable liquids.

The valves are not to be used with compressed air, explosive gases, petroleum spirits and other fuels, or for heating systems.

FOR COLD WATER SUPPLY USE ONLY.



Working Pressures and Temperatures

Water Max. 150 psi at 70°F (Max. 10 bar at 20°C)
Min. 33°F/1°C

Prices are subject to change without notice.

ANGLE STOP ADAPTER VALVE •



PART NO.	THREAD MALE COMPRESSION	THREAD FEMALE COMPRESSION	TUBE OD	BAG QTY	BOX QTY
ASVPP1LF	3/8"	x 3/8"	1/4"	1	30
ASVPP2LF	3/8"	x 3/8"	3/8"	1	30

ANGLE STOP ADAPTER VALVE (CONVERSION THREAD) •



PART NO.	THREAD MALE FEMALE NPS	THREAD COMPRESSION	TUBE OD	BAG QTY	BOX QTY
ASVPP5LF	1/2"	x 3/8"	1/4"	1	40
ASVPP6LF	1/2"	x 3/8"	3/8"	1	20

*Contains less than 0.25% lead.



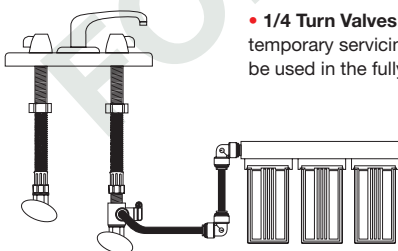
*Conversion Adapter can be threaded to either side of the valve to make configurations of 1/2"x1/2" NPS or 3/8"x3/8" Compression.

• **1/4 Turn Valves.** These valves have been designed to allow temporary servicing of downstream equipment and must only be used in the fully open or fully closed position.

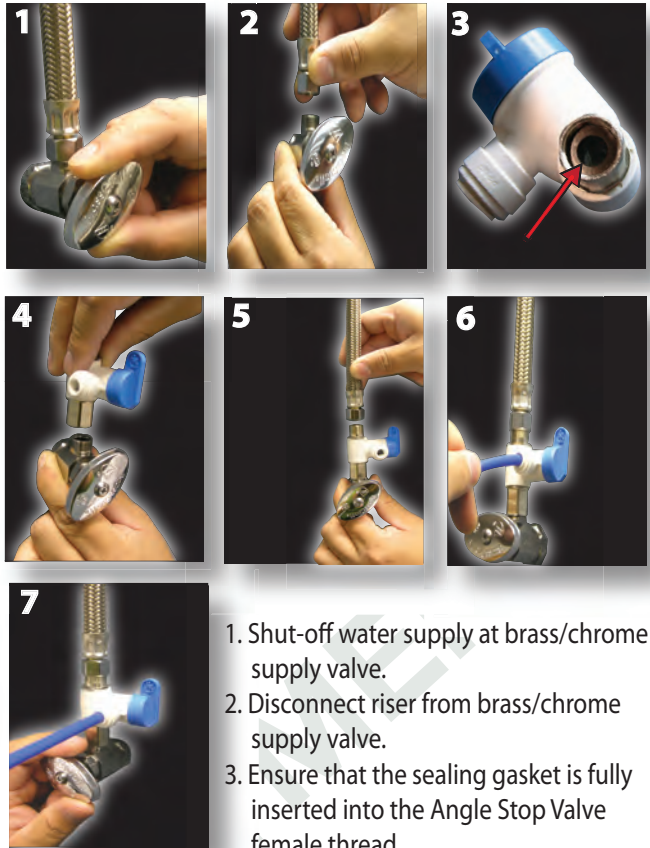
DO NOT USE THESE VALVES:

- In a partially open position to control flow.
- To provide a permanent termination.
- Without tubing assembled or plugged (or threaded connections sealed).
- As a tap or "faucet".

1/4 Turn Valves are indicated by this marker '•'



How to connect the Angle Stop Adapter Valve



1. Shut-off water supply at brass/chrome supply valve.
2. Disconnect riser from brass/chrome supply valve.
3. Ensure that the sealing gasket is fully inserted into the Angle Stop Valve female thread.
4. Install Angle Stop Adapter Valve on supply valve.
5. Connect the riser to the Angle Stop Adapter Valve.
6. Fully insert tubing into the Speedfit side of the valve.
7. Open valves and check for leaks.

ICE MAKER/WATER SUPPLY KIT



PART NO.	BAG QTY	BOX QTY
ICE MAKER KIT	1	12

Includes: 25 feet 1/4" LLDPE Tubing, (1) 1/4" Supply Valve, (1) 1/4" Connector

NEW WATER SUPPLY KIT



PART NO.	BAG QTY	BOX QTY
WSK-W (White)	1	12
WSK-B (Blue)	1	12

Includes: 25 feet 1/4" LLDPE Tubing, (1) 1/4" Supply Valve, (1) 1/4" Connector.

Products in this section are not IAPMO approved.



NSF 51
NSF 61



Inch Polypropylene Shut-Off Valve

The PPSV Range of Shut-Off Valve is offered for tube sizes 1/4" O.D. and 3/8" O.D., produced in polypropylene and fitted with EPDM O-rings. Polypropylene has the advantage of being more chemically resistant than acetal.

The valves are for use with potable water. For use with other potable liquids please contact our Technical Support Department for guidance.

The valves are not to be used with compressed air, explosive gases, petroleum spirits and other fuels or for heating systems.

Working Pressures and Temperatures

Water	Max. 150 psi at 70°F	(Max. 10 bar at 20°C)
	Max. 60 psi at 140°F	(Max. 4 bar at 60°C)
	Min. 33°F/1°C	

Prices are subject to change without notice.

SPEEDFIT TO MALE • NPTF THREAD



PART NO.	TUBE OD	THREAD NPTF	BOX QTY	BAG QTY
PPSV010822W	1/4 x	1/4	200	10
PPSV011223W	3/8 x	3/8	100	10

SPEEDFIT TO SPEEDFIT •



PART NO.	TUBE OD	BOX QTY	BAG QTY
PPSV040808W	1/4	200	10
PPSV041212W	3/8	100	10

SPEEDFIT TO FEMALE • NPTF THREAD



PART NO.	TUBE OD	THREAD NPTF	BOX QTY	BAG QTY
PPSV500822W	1/4 x	1/4	200	10
PPSV501222W	3/8 x	1/4	100	10

• **1/4 Turn Valves.** These valves have been designed to allow temporary servicing of downstream equipment and must only be used in the fully open or fully closed position.

DO NOT USE THESE VALVES:

- In a partially open position to control flow.
- To provide a permanent termination.
- Without tubing assembled or plugged (or threaded connections sealed).
- As a tap or "faucet".

1/4 Turn Valves are indicated by this marker '•'

Accessories

LOCKING CLIP



	PART NO.	TUBE OD	BAG QTY	BOX QTY
Inch	PIC1808R	1/4	100	5000
	PIC1812R	3/8	100	1000
	PIC1816R	1/2	100	2000
Metric	PMC1808R	8mm	100	8000

COLLET LOCKING/RELEASE TOOL



PART NO.	SIZE	BOX QTY	BAG QTY
ICLT/2	3/16 to 1/2	50	10
TSPITool	1/4, 3/8	50	10

TUBE CUTTER



PART NO.	BOX QTY	BAG QTY
TSNIP	50	1
BLADES	300	10

Suitable for up to 12mm tube.



Secures the collet in its position to prevent an accidental disconnection of the tube.

Locking clips should be connected only after full insertion to prevent scraping of the tube. Locking Clips are not designed for use with John Guest Stem Adapters in Swivel Combinations.



FOR POTABLE WATER AND WATER TREATMENT

SINGLE-PACKED **NSF**



System Benefits:

- Quick connect and Disconnect
- Easy to use in confined spaces
- No Tools Required
- A permanent leak-proof connection
- Plastic products are lead-free and corrosion-free

Merchandising and Distribution Benefits:

- Strong Branding
- User Instructions on Bag
- Ziploc Bags
- English and Spanish Instructions
- Regional Sales Support

REDUCER



PART NO.	SIZE	BAG QTY
SIZES: STEM OD x TUBE OD		
PP061208WP	3/8" x 1/4"	1

TUBE CUTTER



PART NO.	SIZE	BAG QTY
TSNIP-US		1

NEW ICE MAKER/WATER SUPPLY KIT



PART NO.	BAG QTY	BOX QTY
ICE MAKER KIT	1	12

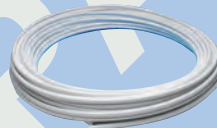
Includes: 25 feet 1/4" LLDPE Tubing, (1) 1/4" Supply Valve, (1) 1/4" Connector



PART NO.	BAG QTY	BOX QTY
WSK-W (White)	1	12
WSK-B (Blue)	1	12

Includes: 25 feet 1/4" LLDPE Tubing, (1) 1/4" Supply Valve, (1) 1/4" Connector.

NEW LLDPE TUBING (New Smaller Coils)



PART NO.	SIZE OD	COIL LENGTHS	BAG QTY	BOX QTY
PEI-08-BI-025F-B	1/4"	25'	1	20
PEI-08-BI-025F-N	1/4"	25'	1	20
PEI-08-BI-050F-B	1/4"	50'	1	12
PEI-08-BI-050F-N	1/4"	50'	1	12
PEI-08-BI-100F-B	1/4"	100'	1	8
PEI-08-BI-100F-N	1/4"	100'	1	8

STRAIGHT SHUT OFF VALVE



PART NO.	TUBE OD	BAG QTY
PPSV040808WP	1/4"	1
PPSV041212WP	3/8"	1

ELBOW SHUT OFF VALVE



PART NO.	SIZE	BAG QTY
SIZES: TUBE OD x THREAD NPT		
PPSV500822WP	1/4" x 1/4"	1
PPSV501222WP	3/8" x 1/4"	1

ANGLE STOP ADAPTER VALVE **Lead Free**



PART NO.	SIZE	BAG QTY
SIZES: THREAD COMPRESSION x TUBE OD		
ASVPP1LF	3/8" x 3/8" x 1/4"	1
ASVPP2LF	3/8" x 3/8" x 3/8"	1
ASVPP5LF	1/2" x 3/8" x 1/4"	1
ASVPP6LF	1/2" x 3/8" x 3/8"	1

• **1/4 Turn Valves.** These valves have been designed to allow temporary servicing of downstream equipment and must only be used in the fully open or fully closed position.

DO NOT USE THESE VALVES:

- In a partially open position to control flow.
- To provide a permanent termination.
- Without tubing assembled or plugged (or threaded connections sealed).
- As a tap or "faucet".

1/4 Turn Valves are indicated by this marker '•'

MALE CONNECTOR



PART NO.	SIZE	BAG QTY
PP010822WP	1/4" x 1/4"	1
PP010823WP	1/4" x 3/8"	1
PP011223WP	3/8" x 3/8"	1

SIZES: TUBE OD x THREAD NPT

UNION TEE



PART NO.	TUBE OD	BAG QTY
PP0208WP	1/4"	1
PP0212WP	3/8"	1

UNION ELBOW



PART NO.	TUBE OD	BAG QTY
PP0308WP	1/4"	1
PP0312WP	3/8"	1

UNION CONNECTOR



PART NO.	TUBE OD	BAG QTY
PP0408WP	1/4"	1
PP0412WP	3/8"	1

REDUCING UNION



PART NO.	SIZE	BAG QTY
SIZES: TUBE OD x TUBE OD		
PP201208WP	3/8" x 1/4"	1

REDUCING TEE



PART NO.	SIZE	BAG QTY
SIZES: TUBE OD END x TUBE OD END x TUBE OD BRANCH		
PP30121208WP	3/8" x 3/8" x 1/4"	1

FAUCET CONNECTOR



PART NO.	SIZE	BAG QTY
SIZES: TUBE OD x THREAD UNS		
PP3208U7WP	1/4" x 7/16"	1 3.19
PP3212U7WP	3/8" x 7/16"	1

TECHNICAL CHECKLIST FOR INCH SIZE QUICK CONNECT FITTINGS LISTED ON PAGES 13-16

Working Pressure and Temperature Range for PP Fittings.

Water Max. 150 psi at 70°F
 Max. 60 psi at 140°F
 Min. 33°F/1°C

Tube Types

Plastic Tube – Polyethylene, nylon and polyurethane conforming to the tolerances shown below. For soft tubing or thin wall tube we recommend the use of tube inserts.

Braided Tube – Use of Tube to Hose Stems listed on page 14 is essential when using braided tube or hose. The use of clamps to retain braided tube on barbs is recommended.

Metal Tube (soft) – Brass, copper or mild steel conforming to the tolerances below.

Metal Tube (hard) – We do not recommend **Super Speedfit®** fittings for hard metal or chrome plated tubes. For stainless steel and other polished metal tubes we recommend the use of Superseal fittings. These are shown on our website. It is essential that outside diameters be free from score marks and that the tube be deburred before inserting the fitting.

Tube Tolerances

PP fittings are offered for tubes with outside diameters to the following tolerances.

Size (inches)	5/32 - 3/16	1/4 - 1/2
Tolerance (inches)	+0.001 / -0.003	+0.001 / -0.004
Size (mm)	4mm - 5mm	6mm - 22mm
Tolerance (mm)	+0.05 / -0.07	+0.05 / -0.10

Installation and System Testing

Fittings and tube should be kept clean and undamaged before use.

All tube and fittings installations must be pressure tested after installation to ensure system integrity before handing over to the final user. Refer to "How to make a connection" on our website at www.johnguest.com.

Chemicals

For use with chemicals or other potentially aggressive liquids, please contact our Technical Support Department. **Super Speedfit®** fittings are not recommended for use with explosive gases, petroleum spirits, and other fuels or for central heating systems.

Collet Covers

Refer to our website for range of collet covers.

Food Quality

All the fittings in this catalog are produced in Food and Drug Administration (FDA) approved



materials and are therefore recommended for food quality applications. The wetted surfaces of John Guest PP, PPSV, ASV Valves and PE Tubing are in compliance with FDA requirements for direct contact with food as detailed in 21CFR part 177.2470 for the body and 177.2600 for the O-ring. NSF International Standard 51 and 61.

Maximum Torque Values for Plastic Threads.

Do not overtighten plastic threaded fittings as this could cause undue stress and eventual failure. Maximum recommended torque figures are shown below.

	Threads		
	1/8" - 1/4"	3/8" - 1/2"	3/4"
Maximum Torque	1.0ft lbs	2ft lbs	3ft lbs
	1.5Nm	3.0Nm	4.0Nm

It is recommended that all installations are checked prior to use to determine that a seal has been made.

The maximum torque figures quoted for use with **Speedfit®** fittings are dependent on the mating thread conforming to the relevant U.S. thread standard.

Maintenance and Replacement Intervals

John Guest products generally require little maintenance but as a minimum we recommend routine visual inspection. Frequency of visual inspection will depend on severity of application and risk of failure. If after visual inspection John Guest products appear damaged, cracked, charred, discolored, heat distorted or corroded, they should be replaced. Any product that is or appears to be leaking should be replaced.

Product life is affected by the severity of the application, the hostility of the working environment and contact with aggressive chemicals or liquids. It is therefore important that specific replacement intervals be considered by specifiers/users/customers based on previous service life or when failure could result in unacceptable downtime, damage or injury risk.

Cleaners and Sanitizing of Fittings

The external surfaces of John Guest products must not come into contact with oxidizing or acidic cleaners and sanitizing agents, for example (but not limited to) those below pH 4, high in sodium hypochlorite level (bleach) or containing hydrogen peroxide. Our plastic material suppliers recommend ECOLAB Oasis 133 as a suitable cleaner for the external surfaces of products manufactured by John Guest.

Several different methods exist for sanitizing the internal surfaces of fluid systems, including sodium hypochlorite, hydrogen peroxide, chlorine dioxide or ozone. It is entirely the

responsibility of the end user to determine if the chosen method is suitable for use with John Guest products over the planned working life of the system. However, to avoid unnecessary early failure, John Guest requires that the disinfection solution must be immediately flushed out at all draw off points with fresh, wholesome water at the end of the disinfection period. The solution must not be left in the system. Disinfection solutions must only come into contact with the internal (fluid carrying) surfaces of the system. If any other surfaces of a fitting come into contact with disinfection solution the whole fitting must be replaced immediately. Polypropylene fittings offer greater resistance to aggressive chemicals but does not have the same mechanical properties as other materials. John Guest polypropylene fittings are generally designated by the part number prefix PP or PPM.

Responsibility of Use

While we give a warranty against defects in manufacture or materials, it is the responsibility of the user/installer to ensure that fittings and related products are suitable for their application. The installation must be carried out correctly in accordance with our recommendations, complying with recognized codes of practice and relevant national standards, and be properly maintained. Please refer to our terms and conditions of sale.

Side Load

Fittings should not be subject to excessive side loads and they should not be used as support brackets. Tubing and fittings should be adequately supported to prevent excessive side loading.

Product Selection and Installation

John Guest fittings and related products are specifically designed and manufactured by John Guest to the Technical specifications set out in the John Guest Product Catalog. All John Guest fittings and related products should be selected, installed, used and maintained in accordance with these Technical specifications. It is the customer's/user's responsibility to ensure that John Guest fittings and related products are suitable for their intended applications, and are properly installed and maintained and are used in accordance with the Technical specifications. It is also the customer's/user's responsibility to provide its customers with any relevant technical information about John Guest products it supplies them.

The company has a policy of continuous research and development and reserves the right to amend without notice the specification and design of all products illustrated in this catalog. John Guest reserves the right to change the color and shape of products. Photographs are for illustration purposes only.

Subject to our Terms and Conditions of Sale.

John Guest USA, Inc. is not responsible for misprints or typographical errors.



MERCHANDISING STAND PLUMBING (BULK)

PART NO.	SIZE
JGSTAND-3W-GPC	6' x 3'

MERCHANDISING STAND INCLUDES:

PART NO.	DESCRIPTION	BOX QTY
PSEI4620	1/2" CTS TEST CAP	150
PEI0220	1/2" CTS TEE	25
PEI0320	1/2" CTS ELBOW	40
PEI0420	1/2" CTS COUPLER	40
PSEI4628	3/4" CTS TEST CAP	80
PEI0228	3/4 CTS TEE	10
PEI0328	3/4" CTS ELBOW	20
PEI0428	3/4 CTS COUPLER	25
PSEI4636	1" CTS TEST CAP	40
PEI0236	1" CTS TEE	5
PEI0336	1" CTS ELBOW	10
PEI0436	1" CTS COUPLER	15
JGSTAND-3W	3 BOX WIDE PROMO WHITE STAND	1W

Also includes:

- Header Board and Stand
- Literature Holder and Literature
- Free Freight



PLUMBING PRE-PACKED STAND

PART NO.	SIZE
JGSTAND-20	2'5" W x 6'9" H

STAND INCLUDES:

PART NO.	DESCRIPTION	QTY
PEI0220P	1/2" CTS UNION TEE	10
PEI0228P	3/4" CTS UNION TEE	10
PEI0320P	1/2" CTS UNION ELBOW	10
PEI0328P	3/4" CTS UNION ELBOW	10
PEI0420P	1/2" CTS UNION COUPLER	10
PEI0428P	3/4" CTS UNION COUPLER	10
PEI062820P	3/4" CTS - 1/2" CTS REDUCER	10
PEI202820P	3/4" CTS X 1/2" CTS REDUCING UNION	10
PEI212820P	3/4" CTS X 1/2" CTS REDUCING ELBOW	10
PEI3028AP	3/4" X 3/4" X 1/2" CTS REDUCING TEE	10
PEISTC2034P	1/2" CTS X 1/2" NPS FEMALE CONNECTOR	10
PSEI012024P	1/2" CTS X 1/2" NPT MALE CONNECTOR	10
PSEI012026P	1/2" CTS X 3/4" NPT MALE CONNECTOR	10
PSEI012826P	3/4" CTS X 3/4" NPT MALE CONNECTOR	10
PSEI4620P	1/2" CTS END CAP	10
PSEI4628P	3/4" CTS END CAP	10
TSI20P	1/2" CTS PIPE INSERT (10-PACK)	10
TSI28P	3/4" CTS PIPE INSERT (5-PACK)	10
PSEISV20P	1/2" CTS STRAIGHT SHUT-OFF VALVE	10
PSEISV28P	3/4" CTS STRAIGHT SHUT-OFF VALVE	10
JPSTAND6	PRE-PACKED PLUMBING STAND	1

Also includes:

- Header Board and Stand
- Literature Holder and Literature
- Free Freight



PLUMBING PRE-PACKED STAND

(Stand designed to hold cut length pieces of pipe)

PART NO.	SIZE
*JGSTAND-CTS-RETL	6' x 2'

RETAIL PRE-PACKED STAND INCLUDES:

PART NO.	DESCRIPTION	QTY
PEI0220P	1/2" CTS UNION TEE	10
PEI0228P	3/4" CTS UNION TEE	10
PEI0320P	1/2" CTS UNION ELBOW	10
PEI0328P	3/4" CTS UNION ELBOW	10
PEI0420P	1/2" CTS UNION COUPLER	10
PEI0428P	3/4" CTS UNION COUPLER	10
PEI062820P	3/4" CTS - 1/2" CTS REDUCER	10
PEI202820P	3/4" CTS X 1/2" CTS REDUCING COUPLER	10
PEI212820P	3/4" CTS X 1/2" CTS REDUCING ELBOW	10
PEI3028AP	3/4" X 3/4" X 1/2" CTS REDUCING TEE	10
PEIBTC2034P	1/2" CTS X 1/2" NPS FEMALE ELBOW	10
PEISTC2034P	1/2" CTS X 1/2" NPS FEMALE CONNECTOR	10
PSEI012024P	1/2" CTS X 1/2" NPT MALE CONNECTOR	10
PSEI012026P	1/2" CTS X 3/4" NPT MALE CONNECTOR	10
PSEI012826P	3/4" CTS X 3/4" NPT MALE CONNECTOR	10
PSEI452826P	3/4" CTS X 3/4" NPT FEMALE CONNECTOR	10
PSEI482024P	1/2" CTS X 1/2" NPT MALE FIXED ELBOW	10
PSEI4620P	1/2" CTS END CAP	5
PSEI4628P	3/4" CTS END CAP	5
PSEISV20P	1/2" CTS STRAIGHT SHUT-OFF VALVE	5
PSEISV28P	3/4" CTS STRAIGHT SHUT-OFF VALVE	5
JG-STAND-PRE	PRE-PACK PLUMBING STAND	1

*Free Freight

Pipe not included

Photographs are for illustration purposes only.

Also includes:

- Header Board and Stand
- Literature Holder and Literature
- Free Freight



CONTRACTOR PAK

PART NO.	SIZE
PEI-CONPAK	9" x 11" x 10" D

CONTRACTOR PAK INCLUDES:

PART NO.	DESCRIPTION	BOX QTY
PEI0420	1/2" CTS COUPLER	5
PEI0428	3/4" CTS COUPLER	5
PEI0320	1/2" CTS ELBOW	5
PEI0328	3/4" CTS ELBOW	5
PSEI4620	1/2" CTS END STOP	10
PSEI4628	3/4" CTS END STOP	5

REUSEABLE END CAPS DISPLAY

PART NO.	SIZE
PEI-ECCJ	9" x 9" x 6" D

REUSEABLE END CAPS INCLUDES:

PART NO.	DESCRIPTION	BOX QTY
PSEI460	1/2" CTS END CAPS	50
PSEI4628	3/4" CTS END CAPS	20
CJ-001	CLEAR COOKIE JAR (EMPTY)	1
WINSTICK-001	3/4" CTS ELBOW	5
PSEI4620	LABELS	2

Some assembly required.



TRY ME COUNTER DISPLAY

PART NO.	SIZE
TRYME-001	11.5" x 8.25" x 3"D

TRY ME COUNTER PACK INCLUDES:

PART NO.	DESCRIPTION	BOX QTY
PEI0240	1/2" CTS COUPLER	1
	1/2" CTS PEX PIPE (6")	1
	1/2" CTS COPPER PIPE (6")	1
	1/2" CTS CPVC PIPE (6")	1
Ships flat, assembly required		



50 SKU PRE-PACKED FITTINGS PLAN-O-GRAM*

PART NO.	SIZE
PLANO-50	3'5" W x 9' H

*PLANOGRAM INCLUDES

PART NO.	DESCRIPTION	QTY
PEI0220P	1/2" CTS UNION TEE	3
PEI0228P	3/4" CTS UNION TEE	3
PEI0320P	1/2" CTS UNION ELBOW	3
PEI0328P	3/4" CTS UNION ELBOW	3
PEI0420P	1/2" CTS UNION COUPLER	3
PEI0428P	3/4" CTS UNION COUPLER	3
PEI062820P	3/4" CTS - 1/2" CTS REDUCER	3
PEI202820P	3/4" CTS X 1/2" CTS REDUCING UNION	3
PEI212820P	3/4" CTS X 1/2" CTS REDUCING ELBOW	3
PEI3028AP	3/4" X 3/4" X 1/2" CTS REDUCING TEE	3
PEIBTC2034P	1/2" CTS X 1/2" NPS FEMALE ELBOW	3
PEISTC2034P	1/2" CTS X 1/2" NPS FEMALE CONNECTOR	3
PSEI012024P	1/2" CTS X 1/2" NPT MALE CONNECTOR	3
PSEI012026P	1/2" CTS X 3/4" NPT MALE CONNECTOR	3
PSEI012826P	3/4" CTS X 3/4" NPT MALE CONNECTOR	3
PSEI452826P	3/4" CTS X 3/4" NPT FEMALE CONNECTOR	3
PSEI482024P	1/2" CTS X 1/2" NPT MALE FIXED ELBOW	3
PSEI4620P	1/2" CTS END CAP	3
PSEI4628P	3/4" CTS END CAP	3
PP010822WP	1/4" X 1/4" NPT MALE CONNECTOR	3
PP010823WP	1/4" X 3/8" NPT MALE CONNECTOR	3
PP011223WP	3/8" X 3/8" NPT MALE CONNECTOR	3
PP0208WP	1/4" TEE	3
PP0212WP	3/8" TEE	3
PP0308WP	1/4" ELBOW	3
PP0312WP	3/8" ELBOW	3
PP0408WP	1/4" UNION	3
PP0412WP	3/8" UNION	3
PP061208WP	3/8" X 1/4" REDUCER	3
PP201208WP	3/8" X 1/4" REDUCING UNION	3
PP30121208WP	3/8" X 3/8" X 1/4" BRANCH PP REDUCING TEE	3
PP3208U7WP	1/4" X 7/16" UNS TAP CONNECTOR	3
PP3212U7WP	3/8" X 7/16" UNS FAUCET ADAPTER	3
PPSV040808WP	1/4" X 1/4" STRAIGHT VALVE	3
PPSV041212WP	3/8" X 3/8" STRAIGHT VALVE	3
PPSV500822WP	1/4" X 1/4" FEMALE NPT ELBOW VALVE	3
PPSV501222WP	3/8" X 1/4" FEMALE NPT ELBOW VALVE	3
ASVPP1LF	3/8" X 3/8" - 1/4" ANGLE STOP VALVE	3
ASVPP2LF	3/8" X 3/8" - 3/8" ANGLE STOP VALVE	3
1/2SCP	1/2" CTS SLIP CONNECTOR	3
3/4SCP	3/4" CTS SLIP CONNECTOR	3
1/2TKP	1/2" CTS SLIP TEE CONNECTOR	3
3/4TKP	3/4" CTS SLIP TEE CONNECTOR	3
TSI20P	1/2" CTS PIPE INSERTS (10-PACK)	3
TSI28P	3/4" CTS PIPE INSERTS (5-PACK)	3
ICEMAKERKIT	QUICK CONNECT ICE MAKER INSTALL KIT	3
TSNIP-US	TUBE CUTTER	3
PSEISV20P	1/2" CTS STRAIGHT SHUT-OFF VALVE	3
PSEISV28P	3/4" CTS STRAIGHT SHUT-OFF VALVE	3
PEI-08-BI-025F-10	1/4" O.D. LLDPE NATURAL TUBING (25' COIL)	3

Also includes:

- Header Board
- Literature Holder and Literature
- Planogram Layout
- Reorder Labels
- Peg hooks (Prepacked in bags of 10)
- Free Freight (does not include Pegboard)



LITERATURE HOLDER

PART NO.	SIZE
LITHOLDER-001	9.75" x 5"

Holds up to 50 JG pocket Style Brochures and over 100 Single Page Tri-Folds and Slim Jims.

Literature holders do not include literature.
Ships flat, assembly required



WATER TREATMENT CENTER PLAN-O-GRAM*

PART NO.	SIZE
PLANO-WT	20" W x 30" H

*PLANOGRAM INCLUDES

PART NO.	DESCRIPTION	QTY
PP0308WP	1/4" ELBOW	5
PP0208WP	1/4" TEE	5
PP0408WP	1/4" UNION	5
PP010822WP	1/4" X 1/4" NPT MALE CONNECTOR	5
PP3208U7WP	1/4" X 7/16" UNS FAUCET CONNECTOR	5
PSEI012826P	3/4" CTS X 3/4" NPT MALE CONNECTOR	5
PP30121208WP	3/8" X 3/8" X 1/4" REDUCING BRANCH TEE	5
PP201208WP	3/8" X 1/4" REDUCING UNION	5
PP011223WP	3/8" X 3/8" NPT MALE CONNECTOR	5
PP3212U7WP	3/8" X 7/16" UNS FAUCET ADAPTER	5
PPSV040808WP	1/4" X 1/4" STRAIGHT VALVE	5
PPSV500822WP	1/4" X 1/4" FEMALE NPT ELBOW VALVE	5
PPSV501222WP	3/8" X 1/4" FEMALE NPT ELBOW VALVE	5
ASVPP1LF	3/8" X 3/8" - 1/4" ANGLE STOP VALVE	5
PEI-08-BI-025F-N	1/4" O.D. LLDPE NATURAL TUBING (25' COIL)	5

Also includes:

- Header Board
- Literature Holder and Literature
- Planogram Layout
- Reorder Labels
- Peg hooks (Prepacked in bags of 10)
- Free Freight (does not include Pegboard)



John Guest® ORDER FORM

Company Information

Company	Account#
Contact	PO #
Phone	Email Address
Fax	State Resale #

Mailing Address

Shipping Address

Address		Address	
City		City	
State	Zip	State	Zip

Part Number	Description	Quantity	Price	Ext. Price

Special Instructions _____ Page _____ of _____

Photocopy this form and fax it to:
973-808-5036

Business Name:

Salesman:

Billing Address:

Delivery Address:

Phone:

Fax:

Email:

Credit Requested (Estimated Monthly Purchases)

In Business Since:

Type Of Business:
 SOLE PROPRIETORSHIP
 PARTNERSHIP
 CORPORATION

Social Security Or Tax ID Number:

D & B Number

***** PLEASE ATTACH A COPY OF YOUR STATE TAX EXEMPTION CERTIFICATE *****

***** PLEASE ATTACH A COPY OF YOUR CREDIT REFERENCES *****

It is understood in signing this document that the Applicant releases permission for credit information to be released by phone or letter by the references attached. The signature below acts as releasing authority to the references approached for credit information, as well as certifies that the information given above is true and complete. The signature also certifies acceptance of the John Guest USA terms and conditions as outlined on the attached.

Print name of Owner/Officer/Authorized Individual

Title:

Signature of Owner/Officer/Authorized Individual

Date:

FOR OFFICE USE ONLY
Credit amount assigned:

Approval:

Group:

Industry

Type:

JOHN GUEST USA, 180 PASSAIC AVENUE, FAIRFIELD, NJ 07004

Fax this sheet, along with tax exemption certificate and credit references, to 973-808-5036 for immediate processing.

TERMS AND CONDITIONS

The products described in this document are hereby offered for sale to be established by John Guest (USA) Inc., its subsidiaries and its authorized distributors. This offer and its acceptance by any customer (the "Buyer") shall be governed by all of the following Terms and Conditions. Buyer's order for any item described in this document, when communicated to John Guest (USA) Inc., its subsidiaries or an authorized distributor (the "Seller") verbally or in writing, shall constitute acceptance of this offer.

1. Terms and Conditions of Sale. All descriptions, quotations, proposals, offers, acknowledgments, acceptances and sales of the Seller's products are subject to and shall be governed exclusively by the terms and conditions stated herein (the "Agreement"). The Buyer's acceptance of any offer to sell is limited to the terms and conditions in the Agreement. Any terms or conditions in addition to, or inconsistent with those stated in the Agreement, proposed by the Buyer in any acceptance of an offer by the Seller, are hereby objected to. No such additional, different or inconsistent terms and conditions shall become part of the agreement between the Buyer and the Seller unless expressly accepted in writing by the Seller. The Seller's acceptance of any offer to purchase by the Buyer is expressly conditioned upon the Buyer's assent to all the terms and conditions in this Agreement, irrespective of any terms in addition to, or inconsistent with those contained in the Buyer's offer. Acceptance of the Seller's products shall in all events constitute such assent.

2. Documents. Unless provided otherwise in the Agreement, all catalog descriptions, illustrations, drawings and literature or independently submitted estimates of performance, weights and measurements or other specifications provided by the Seller are mere approximations and the Seller reserves the right to alter or amend the same at any time. The Seller reserves the right to correct clerical or technical errors in the contract documents. The Buyer shall furnish with his order all necessary specifications and information. The Seller takes no responsibility for goods manufactured, priced or delivered not in accordance with the order or the specifications unless the Buyer's order and specifications are clear and correct.

3. Prices. Unless otherwise provided, all prices contained in our quotations and written acceptances are ex works and do not include the cost of packing. All orders are accepted on the condition that all such prices are subject to revision by the Seller at any time before the goods are dispatched to take account of any price change. In the event that the Buyer does not place the entire order quoted by the Seller for the Buyer, the Seller reserves the right to revise its prices. The Seller also reserves the right to revise its prices if the Buyer modifies the specification or quantity of the goods, or the delivery requirements after the order has been accepted by the Seller.

4. Advice. All advice given in connection with the Seller's goods is provided without charge to the Buyer. Any advice and assistance given by the Seller to the Buyer is given at the Buyer's risk and the Seller shall not be liable for any loss, damage or claim arising therefrom.

5. Payment. (a) Unless otherwise provided in the Agreement, or explicitly agreed upon in writing by the Seller, payment is due in full 30 days from date of shipment of the items purchased herein under. (b) In the case of an installment contract, deliveries or parts, payment for each installment delivery or part shall be made under sub-clause (a) as if the same constituted a separate agreement. (c) Amounts not timely paid shall bear interest at the rate of 2-1/2% above the Seller's bank's prime rate from time to time in force. (d) in the event that the Buyer fails within one calendar month of the date for payment to effect any payment which may be due under the Agreement or any agreement with the Seller, or if the Buyer commits any breach of the Agreement, or if the Buyer becomes insolvent or commits any act of bankruptcy or contemplation of liquidation, the Seller will be entitled, without prejudice to the Seller's other rights, to terminate the Agreement or any unfulfilled part thereof, or at the Seller's option to make partial deliveries.

6. Modifications and Cancellations. This Agreement is not subject to oral modification or cancellation. A Buyer's request for modification or cancellation will not be incorporated into the Agreement unless the request is accepted by the Seller in a writing that amends the Agreement. Acceptance of any such requested modification or cancellation shall be at the Seller's discretion and shall be upon such terms and conditions as the Seller may require.

7. Handling Charge. Goods supplied in accordance with the Buyer's order may

later be returned to the Seller at the Seller's discretion provided the return is pre-authorized, in writing and the merchandise is unused, in original packages, unaltered, clean and no older than 60 days from the date of shipment by the Seller. The Buyer will be required to pay to the Seller a handling charge of 20% of the purchase price of the returned goods. A copy of the original invoice for the merchandise must accompany all returns.

8. Delivery. (a) Any delivery dates quoted are approximate only and the Seller shall have no liability for any delays in delivery. (b) Unless provided otherwise, delivery of the goods shall be made when the Seller has notified the Buyer that the goods are ready for dispatch. Regardless of the method of delivery, delivery shall be made F.O.B. Seller's plant, where the risk of loss shall thereupon pass to the Buyer upon the Seller's delivery to a carrier. Notwithstanding that the Seller's prices are ex-works, the Seller is prepared by special contract to procure carriage or freight and insurance on behalf of the Buyer and at Buyer's cost in which event the Seller shall be under no liability for damage in transit or loss or damage to the goods beyond the point at which the Seller contracts to deliver the same. (c) Seller will not make drop shipments.

9. Inspection and Rejection. (a) The following provisions shall apply in relation to all deliveries of goods: the Seller shall not be held liable for any claims of damage in transit, shortage of delivery or loss of goods, unless in the case of shortage of delivery, a separate notice in writing is given to the carrier concerned and to the Seller within three (3) days of the receipt of the goods, followed by a complete claim in writing within five (5) days of receipt of the goods and in the case of loss of goods, a separate notice in writing is given to the carrier concerned and to the Seller and a complete claim in writing made within thirty (30) days of the date of consignment. The Buyer must inspect the goods on arrival from the carrier, however, where goods are accepted from the carrier concerned without being inspected, the delivery book of the carrier concerned must be signed "not examined". The Seller shall have the right to inspect the goods at the Buyer's premises in respect to any such claims made by the Buyer and the Buyer shall retain such goods until the Seller has inspected such goods or until the Seller has notified the Buyer that the Seller does not wish to inspect such goods. Any breach of these conditions in this provision shall serve as a waiver to any claim brought by the buyer. (b) Without prejudice to the Seller's other rights, should the Buyer fail for any reason to send the Seller forwarding instructions within ninety (90) days after the date of the Seller's notification that the goods are ready for dispatch or to accept delivery of the goods, the Seller shall be entitled at the Buyer's risk and expense to store the goods and/or to procure or effect storage of the goods elsewhere. Goods so stored shall be paid for as if they had been dispatched and/or accepted.

10. Special Tooling. Where it is necessary for the Seller to manufacture or to purchase special tooling, including without limitation tools, dies, jigs, mandrills, fixtures, molds, and patterns in order to execute a contract, the Buyer will be charged with a proportion of the cost of such special tools. Such special tooling shall be and remain the Seller's property notwithstanding payment of any charges made by the Buyer. In no event will the Buyer acquire any interest in apparatus belonging to the Seller which is utilized in the manufacture of the items sold hereunder, even if such apparatus has been specially converted or adopted for such manufacture and notwithstanding any charges paid by the Buyer therefore. Unless otherwise agreed, the Seller shall have the right to alter, discard or otherwise dispose of any special tooling or other property in its sole discretion at any time.

11. Test and Performance. (a) The Seller's goods are, where practicable, submitted to the Seller's standard test before delivery. If special tests are required, these shall be made at the Seller's premises unless otherwise agreed, and will be subject to an extra charge. (b) The Seller accepts no liability for failure to attain any performance figures quoted by the Seller unless the Seller specifically has guaranteed them with an agreed sum as liquidation damages and the Buyer has suffered actual loss by reason of the failure to attain the figures quoted. (c) Any particulars of weights and measurements, power and consumption, power output or performance relating to the goods and like matters furnished by the Seller to the Buyer in the Seller's catalogs, literature or otherwise, are approximate and are intended only to present a general idea of the goods to be supplied and unless previously agreed specifically in writing shall not form part of the Agreement.

12. Buyer's Property. Any designs, tools, patterns, materials, drawings, confidential information or equipment furnished to the Seller by the Buyer, or any other items which become the Buyer's property, may be considered obsolete and may be destroyed by the Seller after two (2) consecutive years have elapsed without the

Buyer placing an order for the items which are manufactured using such property. The Seller shall not be responsible for any loss or damage to such property while it is in the Seller's possession or control.

13. Taxes. Unless otherwise indicated, all prices and charges are exclusive of excise, sales, use, property, occupational or like taxes which may be imposed by any taxing authority upon the manufacture, sale or delivery of the items sold hereunder. If any such taxes must be paid by the Seller, or if the Seller is liable for the collection of such tax, the amount thereof shall be in addition to the amounts for the item sold. The Buyer agrees to pay all such taxes or to reimburse the Seller therefore upon receipt of its invoice. If the Buyer claims exemption from any sales, use or other tax imposed by any taxing authority, the Buyer shall promptly indemnify and hold the Seller harmless from and against any such tax, as well as any interest or penalties thereon which may be assessed if the items are held to be taxable.

14. Warranty. (a) The Seller warrants that the items sold hereunder shall be free from defects in material or workmanship at the time of shipment by the Seller. The Seller warrants that if within 12 months of delivery of the goods to the Buyer the Buyer returns immediately to the Seller's premises any of the said goods which the Buyer believes to be defective, carrier paid, properly packed and clearly marked with the Buyer's full name and address and any other information such as serial numbers which may be necessary to enable the goods to be identified, together with a complete description of the respects in which it is alleged that the goods are defective, they will be repaired or new goods will be supplied in exchange and the goods so repaired or such new goods will be delivered to the Buyer free of charge at the Seller's premises provided that the foregoing warranty shall only be applicable if upon demand by the Seller, the Buyer proves to the Seller's satisfaction: (i) that the defect was due solely to defective workmanship; (ii) that no alterations or repairs have been made to the goods except with the Seller's written consent; (iii) that the defect was not caused by any act of the Buyer or its agents; and (iv) that the defect was not caused by any matter beyond the reasonable control of the Seller, including, without limitation, accident or normal wear and tear. (b) For John Guest PEI, MWI and PSEI Series Plumbing products and Speedfit PEX Pipe only, the warranty period contained in sub-paragraph (a) may be extended to 300 months (25 years) from date of delivery of the goods to the Buyer provided that, in addition to all other requirements, Seller's products are: (i) used in domestic plumbing applications; (ii) Installed by a Licensed Contractor, Plumber or qualified equipment installation professional; and (iii) Installed and operated in accordance with published John Guest technical specifications. (c) All costs and expenses, including freight charges, customs duties, and insurance incurred in returning the goods to the Seller's premises in accordance with this provision shall be paid by the Buyer. The benefit of this warranty shall not be assignable by the Buyer. (d) The warranty contained in sub-paragraphs (a) and (b) above does not extend to any goods not manufactured by the Seller even though supplied by the Seller nor does it extend to any second-hand or reconditioned goods nor does it extend to components manufactured by the Seller but installed, attached or welded by the Buyer or his customer on equipment not manufactured by the Seller. Goods not manufactured by the Seller carry only the warranty (if any) of their makers and the Buyer is entitled to the benefit thereof only so far as the Seller has the power to transfer it. (e) This warranty comprises the sole and entire warranty pertaining to items provided hereunder; the Seller makes no other warranty, guarantee, or representation of any kind whatsoever. All other warranties, including but not limited to, merchantability and fitness for purpose, whether expressed or implied, or arising by operation of law, trade usage, or course of dealing are hereby disclaimed. (f) Notwithstanding the foregoing, there are no warranties whatsoever on items built or acquired wholly or partially to the Buyer's designs or specifications.

15. Limited Remedy. The Seller's liability arising from or in any way connected with the items sold or this Agreement shall be limited exclusively to repair or replacement of the items sold. In no event shall the Seller be liable to the Buyer or any 3rd party for any incidental, consequential or special damages of any kind or nature whatsoever, including but not limited to lost profits arising from or in any way connected with this agreement or items sold hereunder, whether alleged to arise from breach of contract, express or implied warranty, or in tort, including without limitation, negligence, failure to warn or strict liability.

16. Indemnity for Infringement of Intellectual Property Rights. (a) The Buyer shall defend and indemnify the Seller against all actions, claims, demands, penalties and costs by 3rd parties in tort, or for infringement, or alleged infringement, of patents, trademarks, copyrights, trade dress, trade secret or other rights of any 3rd party resulting from the goods manufactured in accordance with the Buyer's specifications or based on any information provided by the Buyer. The Buyer will defend any

action against the Seller for title, patent, trademark, copyright infringement, or other claimed by a 3rd party at the Buyer's sole cost and expense. (b) The Seller shall have no liability for infringement of any patents, trademarks, copyrights, trade dress, trade secrets or similar rights except as provided in this provision. The Seller will defend and indemnify the Buyer against allegations of infringement of US patents, US trademarks, copyrights, trade dress and trade secrets ("Intellectual Property Rights"). The Seller will defend at its expense and will pay the cost of any settlement or damages awarded in an action brought against the Buyer based on an allegation that an item sold pursuant to this contract infringes the Intellectual Property Rights of a 3rd party. The Seller's obligation to defend and indemnify the Buyer is contingent on the Buyer notifying the Seller within 10 days after sole control over the defense of any allegations or actions, including all negotiations for settlement or compromise. If an item sold hereunder is subject to a claim that it infringes the Intellectual Property Rights of a 3rd party, the Seller may, at its sole expense and option, procure for the Buyer the right to continue using said item, replace or modify said item so as to make it non-infringing, or offer to accept return of said item and return the purchase price less a reasonable allowance for depreciation. Notwithstanding the foregoing, the Seller shall have no liability for claims of infringement based on information provided by Buyer, or directed to items delivered hereunder for which the designs are specified in combination or use in a system of any item sold hereunder. The foregoing in this provision shall constitute the Seller's sole and exclusive liability and the Buyer's sole and exclusive remedy for infringement of Intellectual Property Rights.

17. Lien. In addition to any right of lien to which the Seller may by law be entitled, the Seller shall have a general lien on all goods of the Buyer in the Seller's possession (although such goods or some of them may have been paid for) for the unpaid price of any other goods sold and delivered to the Buyer by the Seller under the same or other contracts.

18. Waiver. The Seller's rights shall not be affected or restricted by any indulgence or forbearance granted to the Buyer. No waiver by the Seller of any breach shall operate as a waiver of any later breach.

19. Force Majeure. The Seller shall be excused from performing any of its obligations under this Agreement which are prevented or delayed by any occurrence not within the reasonable control of the Seller, including but not limited to, accidents, acts of God, destruction or damage to the goods or the Seller's manufacturing plant, delays or failures in delivery of carriers or suppliers, shortages of materials, strikes or other labor matters, floods, earthquakes, fire, riots, explosions, or any regulations, rules, ordinances or orders of any governmental authority, federal, state or local, whether such cause exists at the date of the order or not.

20. Buyer's Representation of Solvency. The Buyer hereby represents that as of the signing of this Agreement it was not insolvent within the meaning of the Uniform Commercial Code or the Bankruptcy Laws of the United States.

21. Assignment and Delegation. The rights and obligations of the parties under this Agreement may not be assigned or delegated, except on the express written consent of the other party to the assignment or delegation.

22. Integration. The rights and obligations of the parties and the terms and conditions set forth herein, together with any amendments, modifications and any different terms and conditions expressly accepted by the Seller in writing, shall constitute a complete and exclusive statement of the terms of this Agreement. This Agreement supersedes not only all prior agreements, but also oral agreements made contemporaneously with the execution of this Agreement. All such materials may not be used to supplement, explain, or contradict the terms of this Agreement.

23. Severability. If any of these conditions or any part thereof purports to exclude or restrict or limit any liability and such exclusion or restriction or limitation is prohibited or rendered void or unenforceable by any legislation to which it is subject, or is itself prohibited or rendered void or unenforceable by any legislation to which it is subject, then the exclusion restriction or limitation on the condition or part thereof in question shall be so prohibited or rendered void or unenforceable and the validity or enforceability of any other part of these provisions shall not thereby be affected.

24. Governing Law/Limitation on Actions. The terms, conditions, rights, and obligations under this Agreement shall be construed under the laws of the State of New York, without regard to principles of conflicts of laws. No actions arising out of the sale of the items sold hereunder or this Agreement may be brought by the Buyer more than two (2) years after such cause of action accrues.

Notes

John Guest Companies



John Guest USA, a world-leading supplier of Fluid System Products, located in Northern New Jersey is part of a progressive and professional organization with multiple locations worldwide. For over 30 years the John Guest organization has built its reputation by providing high quality products and high levels of customer service.

Through a strong commitment to growth and innovation, John Guest USA will continue to serve its community and customers well into the future.

John Guest USA, Inc. distributes its products across North, Central, and South America, the Caribbean, and the US Virgin Islands.

John Guest USA, Inc., is not responsible for misprints or typographical errors.



John Guest USA Inc.

180 Passaic Avenue
Fairfield, NJ 07004

Tel.: 973.808.5600

Web: www.johnguest.com
www.johnguestspeedfit.com

E-mail: info@johnguest.com

E-mail Order Line: jgusa.orders@johnguest.com

Toll Free: 800.945.4872

Fax: 973.808.5036



John Guest.

Horton Road, West Drayton, Middlesex, UB7 8JL, England.
Tel: (44) (0) (1895) 449233 Fax: (44) (0) (1895) 420321



John Guest France S.A.

143-147 Avenue Charles Floquet, Parc Gustave Eiffel,
93593 Le Blanc Mesnil, Cedex, FRANCE.
Tel: (33) (1) 48 65 52 29 Fax: (33) (1) 48 65 43 40



John Guest GmbH

Ludwig-Erhard-Allee 30, D-33719 Bielefeld, GERMANY
Tel: (49) (521) 972 560 Fax: (49) (521) 972 5680



John Guest Czech s.r.o.

Vrbenska 2290, CZ - 37001 Ceske Budejovice, CZECH REPUBLIC.
Tel: (420) (387) 002 040 Fax: (420) (387) 002 048



John Guest Polska Sp. z o.o.

Ul. Staroletcka 7, 61-361, Poznan, POLAND.
Tel: (48) (61) 87 80 408 Fax: (48) (61) 87 80 285



John Guest s.r.l.

Via Vincenzo Lancia 13, 10038 Casabianca-Verolengo (Torino), ITALY.
Tel: (39) (011) 957 5880 Fax: (39) (011) 957 6144



John Guest s.l.

C/ de La Electronica No.7, Poligono Industrial La Ferreria,
Montcada i Reixac, 08110 Barcelona, SPAIN.
Tel: (34) (93) 575 0027 Fax: (34) (93) 575 0178



John Guest Korea Ltd

Unit 552-27 Kajwa Dong, Seo Ku,
Incheon City, 404-812 Korea.
Tel: (82) (32) 584 3370 Fax: (82) (32) 584 3372



John Guest Pacific Ltd

P.O. Box 19553, 606 Rosebank Road, Avondale,
Auckland, NEW ZEALAND.
Tel: (64) (9) 8281353 Fax: (64) (9) 828 5927



John Guest Pacific Ltd

Unit 6, 33 Nyrang Street, Lidcombe, Sydney
N.S.W. 2141, AUSTRALIA.
Tel: (61) (2) 9737 9088 Fax: (61) (2) 9737 9122

